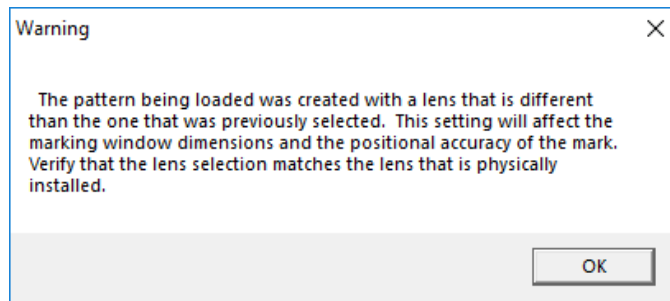




Different Lens Selected Warning

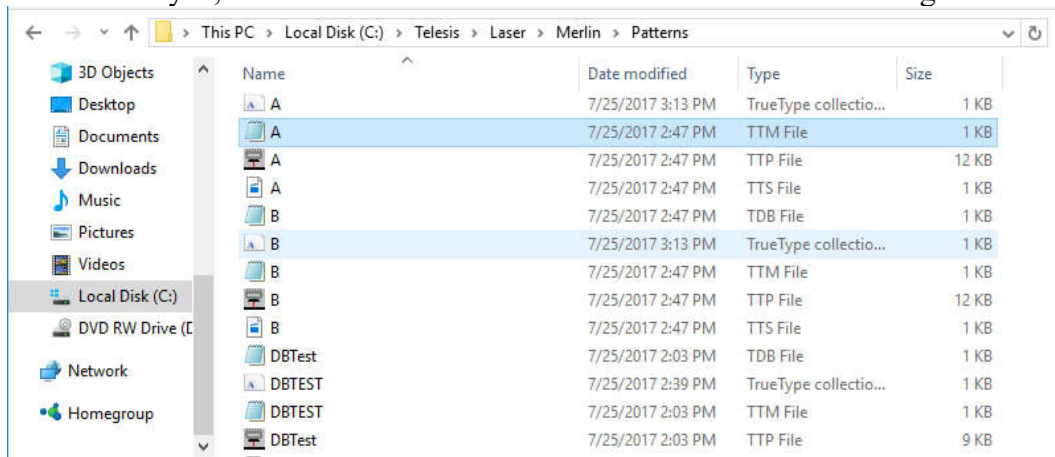
Occasionally, when you open a pattern in Merlin LS, you will get the following warning.



What this means is that the pattern being opened was created with a different lens setting than the one currently set. This setting can be found in the Marker/Properties menu. There is a dropdown menu for the Scanhead and lens where the lens is specified. If the wrong lens is selected, it will not alter the actual focal (working) distance of the installed lens but will make the sizes of the marked object different from the programmed sizes.

There are two ways to correct this issue. One is to make sure that the correct lens is selected under marking properties, then save the pattern with a different name. You can then delete the original pattern, then save the new pattern as the old name. This is rather time consuming, as it must be done for every pattern.

The second way is to alter the machine file for each pattern to reflect the correct setting. Each pattern actually has multiple files associated with it, that hold such info as the current pattern serial number, fonts, and the lens and offset parameters. To find the files, open The Merlin LS folder, then the Patterns folder. This is usually C:\Telesis\Lasers\Merlin\Patterns. You will see something like this:



You will notice that in this case, the Pattern named A has several different file types associated with it. The one we are interested in is the TTM file, which is highlighted above. If you open the file, usually with Notepad, you will see this:

```
A - Notepad
File Edit Format View Help
MACHINE
MARKER
INTERFACE
RTC4
CONTROLLER
XPress
MODEL
XPress EV
LENS_SELECTION
SCANcube_10_160
```

There are other items below the LEN SELECTION line, but we can ignore them for now. You will see that the selected lens is the SCANcube_10_160. We will assume for this exercise that we are actually using a SCANgine_14_163. If we create a pattern with the correct lens setting and save it, we can open its TTM file and see this:

```
P475-255R - Notepad
File Edit Format View Help
MACHINE
MARKER
INTERFACE
RTC4
CONTROLLER
Model 6
MODEL
FQ
LENS_SELECTION
SCANgine_14_163
```

We can then copy the correct setting, and then paste it into each of the other TTM files on your machine.

```
A - Notepad
File Edit Format View Help
MACHINE
MARKER
INTERFACE
RTC4
CONTROLLER
XPress
MODEL
XPress EV
LENS_SELECTION
SCANgine_14_163
```





Once the new info is placed into the TTM file, simply save it. This is much faster than doing it pattern by pattern, but you should make sure that you are comfortable working with files in this manner. One other thing, usually when Merlin is started, unless a different file is specified in the preferences setup, it will open with a pattern named Untitled. This is NOT simply a blank file. It is an actual Merlin pattern file, and can be found in the Pattern folder. Be sure to update the lens selection in this file also, or the wrong lens can be selected every time Merlin starts up.

Once all the files are updated to the correct lens, you should not see the warning again.

