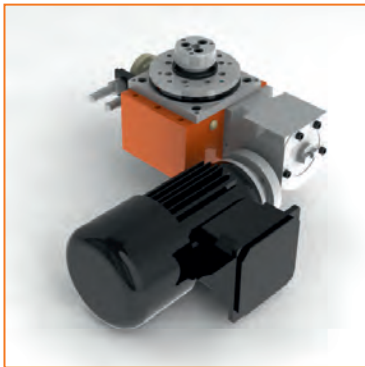




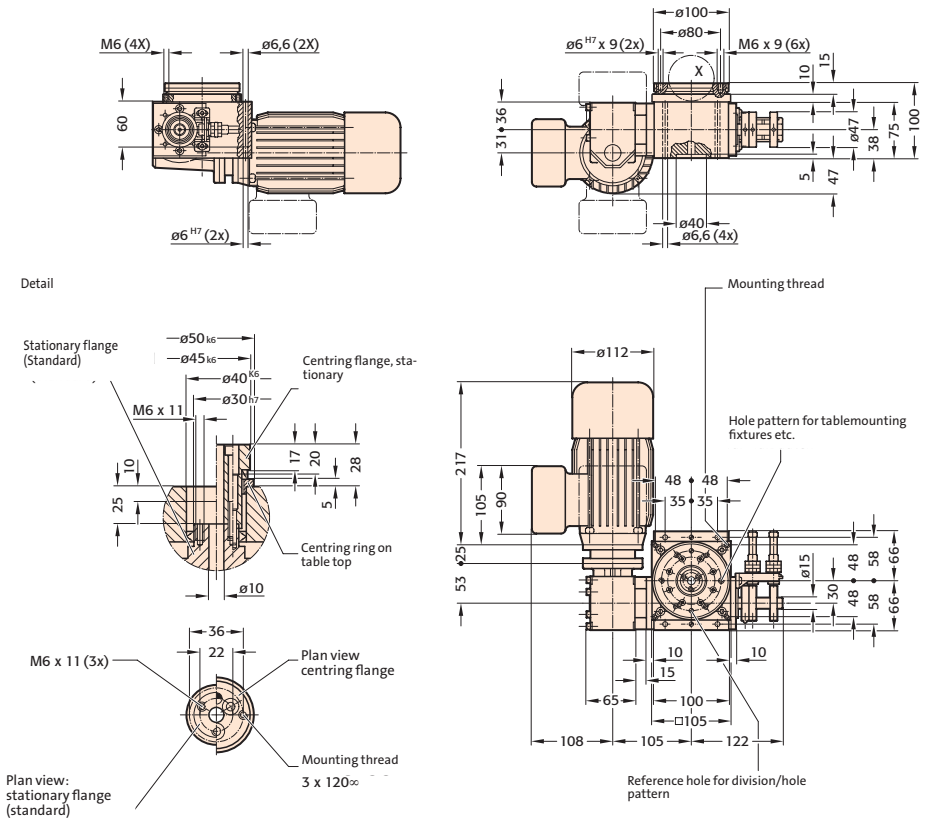
FIBROTOR ER.10.0100.1.152.XX.0.0.3
Drive arrangement 152



FIBROTOR ER.10.0100.1.152.XX.0.0.3
Drive arrangement 152

Installed dimensions FIBROTOR® ER.10

(Drive arrangement 152, for other drive arrangements, drawings of CAD data are available)



Technical data FIBROTOR® ER.10 Encoding

2
3
4
5
6
7
8

ER.10 . 0 1 0 0 . 1 0 . . .

Table top dimensions	Standard dimensions	Ø 100 mm	.0100	2
Drive motor	Standard braking motor		.1	3
Drive arrangement	See planning documents under www.fibrotor.de/downloads		.XXX	4
Divisions 2, 3, 4, 5, 6, 8, 10, 12, 16, 20, 24			.XX	5
Additional modules	Without additional modules		.0	6
	Vertical version		.3	7
	Vertical version with ground plate		.4	7
	Centring ring Centring flange Centring ring and centring flange		.1 .2 .3	8
Precisions	Division 2 – 12 Division 16 – 24	± 60" ± 70"		
In arc length (on Ø 100 mm)	Division 2 – 12 Division 16 – 24	± 0,015 mm ± 0,017 mm		
Axial runout		0,02 mm		
Concentricity of the centre hole		0,02 mm		
Plane parallelism		0,04 mm		
Direction of rotation	Any, limit switch set for cw rotation			
Indexing frequency		40 c/min		
Indexing-dwell angle	Division 2 Division 3 – 5 Division 6 – 12 Division 16 – 24	300° / 60° 300° / 60° 300° / 60° 135° / 45°		
Voltage	Motor and brake	400 - 460 VAC, 50/60 Hz		
Motor output	Depending on indexing time and mass moment of inertia	0,09 – 0,18 kW		
Centre hole		Ø 10 mm		
Working position	Any, standard: Horizontal table top, (please specify other mounting positions on ordering)			
Weight		approx. 12 kg		

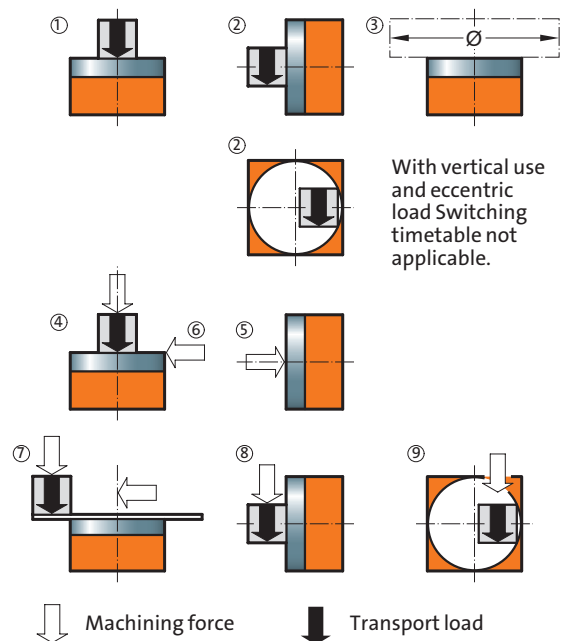
Indexing times FIBROTOR® ER.10

Divisions

2	t _i in s	2,41	2,01	1,81	1,53	1,20	1,00	0,80			
	J in kgm ²	5,22	3,62	2,93	2,09	1,30	0,90	0,58			
3	t _i in s	2,19	1,82	1,64	1,39	1,09	0,91	0,73	0,55		
	J in kgm ²	6,86	4,86	3,94	2,81	1,75	1,21	0,78	0,44		
4	t _i in s	2,19	1,82	1,64	1,39	1,09	0,91	0,73	0,55		
	J in kgm ²	9,47	6,72	5,56	3,96	2,47	1,71	1,10	0,62		
5	t _i in s	2,19	1,82	1,64	1,39	1,09	0,91	0,73	0,55		
	J in kgm ²	12,38	9,07	7,35	5,24	3,26	2,27	1,45	0,81		
6	t _i in s	2,19	1,82	1,64	1,39	1,09	0,91	0,73	0,55	0,44	
	J in kgm ²	15,54	11,03	9,23	6,58	4,14	2,91	1,86	1,05	0,66	
8	t _i in s	2,19	1,82	1,64	1,39	1,09	0,91	0,73	0,55	0,44	0,36
	J in kgm ²	21,20	14,72	12,19	8,69	5,59	3,92	2,54	1,43	0,89	0,62
10	t _i in s	2,19	1,82	1,64	1,39	1,09	0,91	0,73	0,55	0,44	0,36
	J in kgm ²	21,49	14,92	12,09	9,10	5,67	3,94	2,52	1,42	0,91	0,63
12	t _i in s	2,19	1,82	1,64	1,39	1,09	0,91	0,73	0,55	0,44	0,36
	J in kgm ²	23,64	16,82	13,95	10,64	6,85	4,75	3,04	1,71	1,09	0,76
16	t _i in s	0,99	0,82	0,74	0,62	0,49	0,41	0,33	0,25		
	J in kgm ²	7,08	5,03	4,21	3,17	1,98	1,37	0,88	0,49		
20	t _i in s	0,99	0,82	0,74	0,62	0,49	0,41	0,33	0,25		
	J in kgm ²	7,99	5,68	4,76	3,58	2,23	1,55	0,99	0,56		
24	t _i in s	0,99	0,82	0,74	0,62	0,49	0,41	0,33	0,25		
	J in kgm ²	9,86	7,01	5,87	4,42	2,75	1,91	1,22	0,69		

Load data FIBROTOR® ER.10

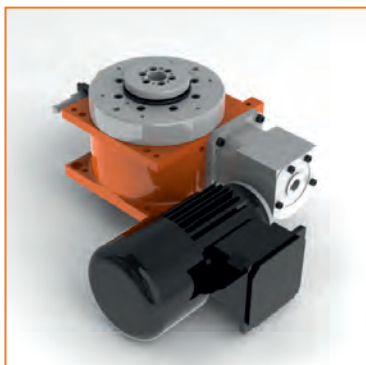
Perm. transport load				
Horizontal table top	kg	100	①+②	
Vertical table top	kg	50		
Table top, upside-down	kg	50		
Perm. add-on diameter				
Horizontal	mm	520	③	
Vertical	mm	520		
Upside-down	mm	520		
Perm. axial loading on the table top				
Horizontal	N	4000	④+⑤	
Vertical	N	1500		
Upside-down	N	1500		
Perm. radial loading on table top				
Horizontal	N	1000	⑥	
Vertical	N	1000		
Upside down	N	1000		
Perm. tilting moment on positioned table top				
Horizontal	Nm	350	⑦+⑧	
Vertical	Nm	200		
Upside-down	Nm	150		
Perm. tilting moment on rotating table top				
Horizontal	Nm	100	⑦+⑧	
Vertical	Nm	100		
Upside-down	Nm	50		
Perm. tangential moment on positioned table top				
Horizontal	Nm	25	⑨	
Vertical	Nm	25		
Upside-down	Nm	25		



CAD files, technical data and planning documentation can be downloaded from www.fibrotor.de



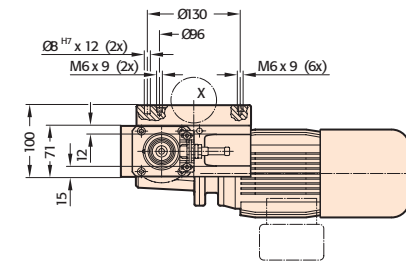
FIBROTOR ER.11.0160.1.152.XX.0.0.3
Drive arrangement 152



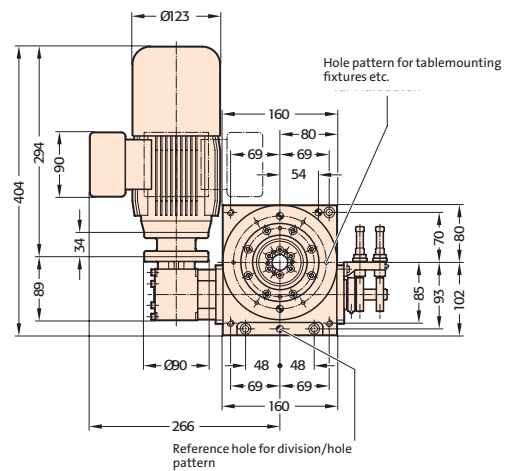
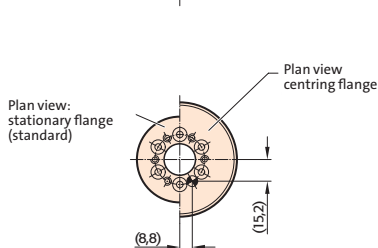
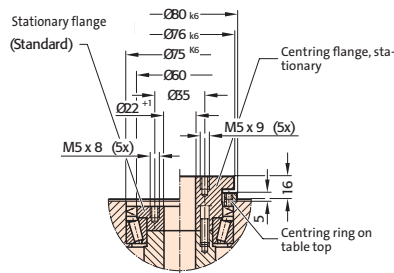
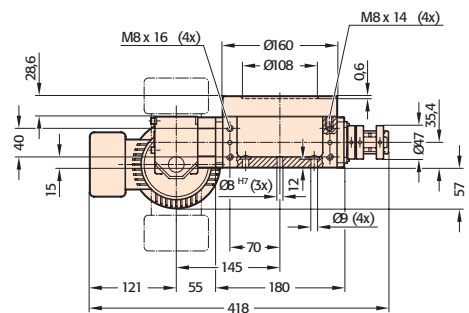
FIBROTOR ER.11.0160.1.152.XX.0.0.3
Drive arrangement 152

Installed dimensions FIBROTOR® ER.11

(Drive arrangement 152, for other drive arrangements, drawings of CAD data are available)



Detail



Technical data FIBROTOR® ER.11

Encoding

ER.11 . 0 1 6 0 . 1 0

Table top dimensions	Standard dimensions	Ø 160 mm	.0160	②
Drive motor	Standard braking motor		.1	③
Drive arrangement	See planning documents under www.fibrotor.de/downloads		.XXX	④
Divisions 2, 3, 4, 5, 6, 8, 10, 12, 16, 20, 24			.XX	⑤
Additional modules	Without additional modules		.0	⑥
	Vertical version		.3	⑦
	Vertical version with ground plate		.4	⑦
	Centring ring Centring flange Centring ring and centring flange		.1 .2 .3	⑧
Precisions	Division 2 – 12 Division 16 – 24	± 40" ± 50"		
In arc length (on Ø 160 mm)	Division 2 – 12 Division 16 – 24	± 0,015 mm ± 0,019 mm		
Axial runout		0,015 mm		
Concentricity of the centre hole		0,015 mm		
Plane parallelism		0,03 mm		
Direction of rotation	Any, limit switch set for cw rotation			
Indexing frequency		40 c/min		
Indexing-dwell angle	Division 2 Division 3 – 5 Division 6 – 12 Division 16 – 24	330° / 30° 300° / 60° 270° / 90° 135° / 45°		
Voltage	Motor and brake	400 - 460 VAC, 50/60 Hz		
Motor output	Depending on indexing time and mass moment of inertia	0,09 – 0,18 kW		
Centre hole		Ø 22 mm		
Working position	Any, standard: Horizontal table top, (please specify other mounting positions on ordering)			
Weight		approx. 20 kg		

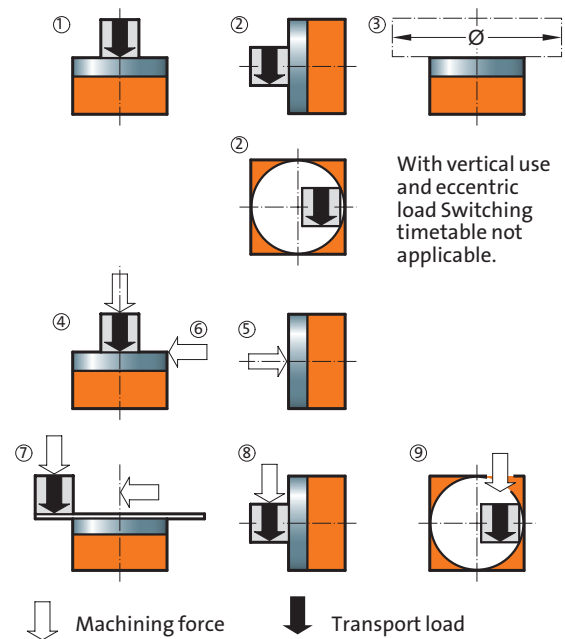
Indexing times FIBROTOR® ER.11

Division

2	t _s in s	3,06	2,32	1,83	1,47	1,10	0,92	0,71	0,59	0,47		
	J in kgm ²	20,38	11,77	7,33	4,69	2,63	1,82	1,08	0,75	0,47		
3	t _s in s	2,78	2,50	2,11	1,79	1,67	1,36	1,07	0,89	0,71	0,54	
	J in kgm ²	27,37	23,40	16,68	11,93	10,39	6,89	4,29	2,97	1,90	0,92	
4	t _s in s	2,78	2,50	2,11	1,79	1,67	1,36	1,07	0,89	0,71	0,54	
	J in kgm ²	39,03	33,37	23,79	17,38	15,14	10,03	6,25	4,33	2,77	1,55	
5	t _s in s	2,78	2,50	2,11	1,79	1,67	1,36	1,07	0,89	0,71	0,54	
	J in kgm ²	51,59	44,10	31,45	22,97	20,01	13,26	8,26	5,73	3,66	2,06	
6	t _s in s	2,50	2,25	1,90	1,61	1,50	1,22	0,96	0,80	0,64	0,48	0,39
	J in kgm ²	51,31	42,50	30,98	22,64	19,93	13,35	8,32	5,77	3,69	2,07	1,32
8	t _s in s	2,50	2,25	1,90	1,61	1,50	1,22	0,96	0,80	0,64	0,48	0,39
	J in kgm ²	69,99	57,98	42,26	30,89	27,19	18,22	11,35	7,88	5,04	2,83	1,80
10	t _s in s	2,50	2,25	1,90	1,61	1,50	1,22	0,96	0,80	0,64	0,48	0,39
	J in kgm ²	88,67	73,45	53,54	39,14	34,45	23,08	14,38	9,98	6,38	3,59	2,29
12	t _s in s	2,50	2,25	1,90	1,61	1,50	1,22	0,96	0,80	0,64	0,48	0,39
	J in kgm ²	90,69	75,13	54,76	40,03	35,24	23,61	14,71	10,21	6,53	3,67	2,34
16	t _s in s	1,25	1,13	0,95	0,80	0,75	0,61	0,48	0,40	0,32		
	J in kgm ²	30,53	25,29	18,43	13,47	11,86	7,94	4,94	3,43	2,19		
20	t _s in s	1,25	1,13	0,95	0,80	0,75	0,61	0,48	0,40	0,32		
	J in kgm ²	36,50	30,24	22,04	16,11	14,18	9,50	5,91	4,10	2,62		
24	t _s in s	1,25	1,13	0,95	0,80	0,75	0,61	0,48	0,40	0,32		
	J in kgm ²	45,06	37,33	27,20	19,88	17,50	11,72	7,30	5,07	3,24		

Load data FIBROTOR® ER.11

Perm. transport load				
Horizontal table top	kg	500	①+②	
Vertical table top	kg	200		
Table top, upside-down	kg	200		
Perm. add-on diameter				
Horizontal	mm	800	③	
Vertical	mm	800		
Upside-down	mm	800		
Perm. axial loading on the table top				
Horizontal	N	8000	④+⑤	
Vertical	N	3500		
Upside-down	N	3500		
Perm. radial loading on table top				
Horizontal	N	3500	⑥	
Vertical	N	3500		
Upside down	N	3500		
Perm. tilting moment on positioned table top				
Horizontal	Nm	750	⑦+⑧	
Vertical	Nm	450		
Upside-down	Nm	250		
Perm. tilting moment on rotating table top				
Horizontal	Nm	200	⑦+⑧	
Vertical	Nm	200		
Upside-down	Nm	100		
Perm. tangential moment on positioned table top				
Horizontal	Nm	300	⑨	
Vertical	Nm	300		
Upside-down	Nm	300		



CAD files, technical data and planning documentation can be downloaded from www.fibrotor.de



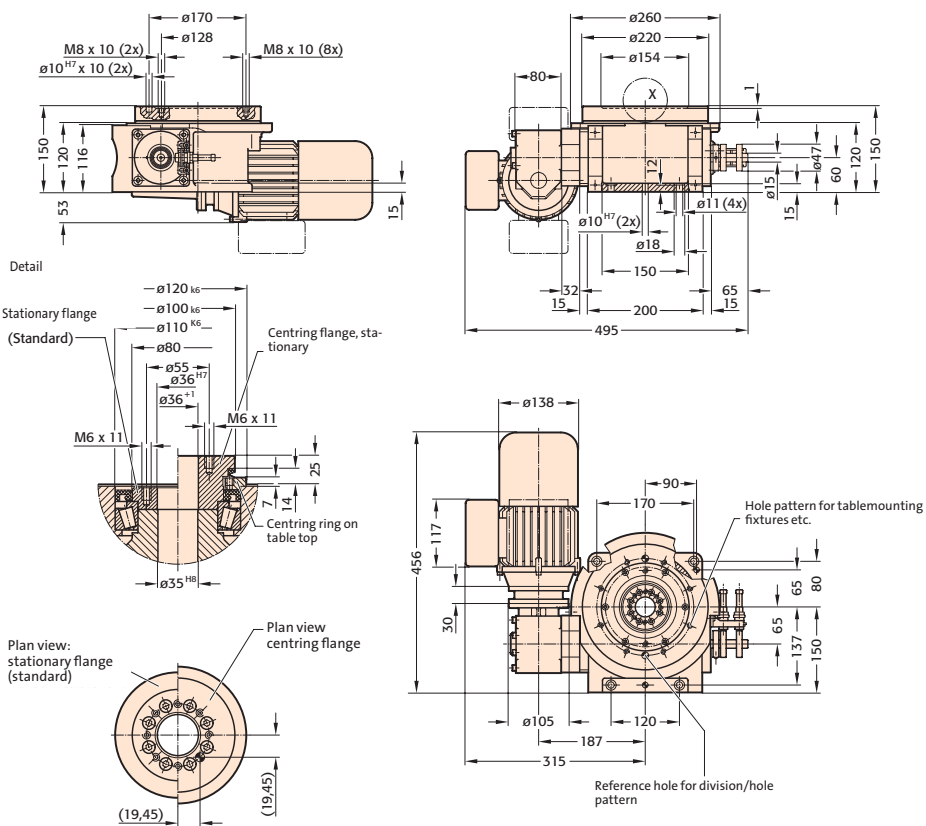
FIBROTOR ER.12.0220.1.152.XX.0.0.3
Drive arrangement 152



FIBROTOR ER.12.0220.1.152.XX.0.0.3
Drive arrangement 152

Installed dimensions FIBROTOR® ER.12

(Drive arrangement 152, for other drive arrangements, drawings of CAD data are available)



Technical data FIBROTOR® ER.12

Encoding

ER.12 . 0 2 2 0 . 1 0

Table top dimensions	Standard dimensions	$\phi 220$ mm	.0220	②
Drive motor	Standard braking motor		.1	③
Drive arrangement	See planning documents under www.fibrotor.de/downloads		.XXX	④
Divisions 2, 3, 4, 5, 6, 8, 10, 12, 16, 20, 24			.XX	⑤
Additional modules	Without additional modules		.0	⑥
	Vertical version		.3	⑦
	Vertical version with ground plate		.4	⑦
	Centring ring Centring flange Centring ring and centring flange		.1 .2 .3	⑧
Precisions	Division 2–12 Division 16–24	$\pm 35''$ $\pm 40''$		
In arc length (on $\phi 220$ mm)	Division 2–12 Division 16–24	$\pm 0,019$ mm $\pm 0,021$ mm		
Axial runout		0,02 mm		
Concentricity of the centre hole		0,02 mm		
Plane parallelism		0,04 mm		
Direction of rotation	Any, limit switch set for cw rotation			
Indexing frequency		40 c/min		
Indexing-dwell angle	Division 2 Division 3–5 Division 6–12 Division 16–24	$330^\circ / 30^\circ$ $300^\circ / 60^\circ$ $270^\circ / 90^\circ$ $135^\circ / 45^\circ$		
Voltage	Motor and brake	400 - 460 V 3 AC, 50/60 Hz		
Motor output	Depending on indexing time and mass moment of inertia	0,18 – 0,37 kW		
Centre hole		$\phi 35$ mm		
Working position	Any, standard: Horizontal table top, (please specify other mounting positions on ordering)			
Weight		approx. 35 kg		

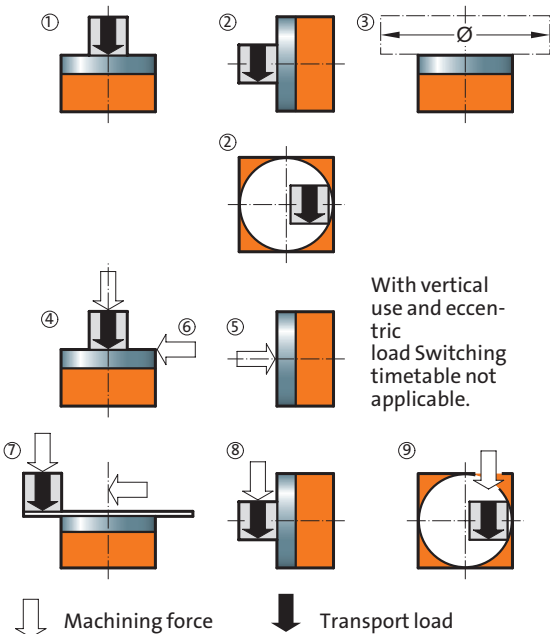
Indexing times FIBROTOR® ER.12

Divisions

2	t _i in s	3,06	2,44	1,83	1,57	1,18	0,98						
	J in kgm ²	44,01	28,77	16,51	12,37	6,93	4,79						
3	t _i in s	2,78	2,22	1,67	1,43	1,07	0,89	0,71	0,54				
	J in kgm ²	59,13	39,50	22,43	16,63	9,32	6,45	4,19	2,33				
4	t _i in s	2,78	2,22	1,67	1,43	1,07	0,89	0,71	0,54				
	J in kgm ²	84,34	56,35	32,00	23,74	13,32	9,23	6,01	3,35				
5	t _i in s	2,78	2,22	1,67	1,43	1,07	0,89	0,71	0,54				
	J in kgm ²	129	86,33	49,05	36,39	20,44	14,17	9,24	5,16				
6	t _i in s	2,50	2,00	1,50	1,29	0,96	0,80	0,64	0,48	0,39			
	J in kgm ²	128	84,07	48,31	36,25	20,58	14,42	9,20	5,15	3,27			
8	t _i in s	2,50	2,00	1,50	1,29	0,96	0,80	0,64	0,48	0,39			
	J in kgm ²	175	114	65,93	49,47	28,09	19,69	12,58	7,04	4,48			
10	t _i in s	2,50	2,00	1,50	1,29	0,96	0,80	0,64	0,48	0,39			
	J in kgm ²	222,08	145	83,54	62,69	35,61	24,97	15,95	8,94	5,70			
12	t _i in s	2,50	2,00	1,50	1,29	0,96	0,80	0,64	0,48	0,39			
	J in kgm ²	268	175	100	75,71	43,01	30,16	19,28	10,81	6,90			
16	t _i in s	1,25	1,00	0,75	0,64	0,48	0,40	0,32	0,24	0,19	0,63	0,50	0,38
	J in kgm ²	73,83	48,34	28,10	21,77	12,61	8,73	5,56	3,10	1,96	21,23	13,56	7,60
20	t _i in s	1,25	1,00	0,75	0,64	0,48	0,40	0,32	0,24	0,19	0,64	0,48	0,40
	J in kgm ²	104	68,25	39,69	30,76	17,82	12,35	7,88	4,40	2,79	31,74	17,82	12,35
24	t _i in s	1,25	1,00	0,75	0,64	0,48	0,40	0,32	0,24	0,19	0,63	0,50	0,38
	J in kgm ²	128	84,26	49,00	37,99	22,01	15,27	9,74	5,45	3,46	37,04	23,68	13,29

Load data FIBROTOR® ER.12

Perm. transport load				
Horizontal table top	kg	800	①+②	
Vertical table top	kg	300		
Table top, upside-down	kg	300		
Perm. add-on diameter				
Horizontal	mm	1000	③	
Vertical	mm	1000		
Upside-down	mm	1000		
Perm. axial loading on the table top				
Horizontal	N	12000	④+⑤	
Vertical	N	5000		
Upside-down	N	5000		
Perm. radial loading on table top				
Horizontal	N	8000	⑥	
Vertical	N	8000		
Upside down	N	8000		
Perm. tilting moment on positioned table top				
Horizontal	Nm	2000	⑦+⑧	
Vertical	Nm	1500		
Upside-down	Nm	600		
Perm. tilting moment on rotating table top				
Horizontal	Nm	600	⑦+⑧	
Vertical	Nm	600		
Upside-down	Nm	300		
Perm. tangential moment on positioned table top				
Horizontal	Nm	400	⑨	
Vertical	Nm	400		
Upside-down	Nm	400		



CAD files, technical data and planning documentation can be downloaded from www.fibrotor.de



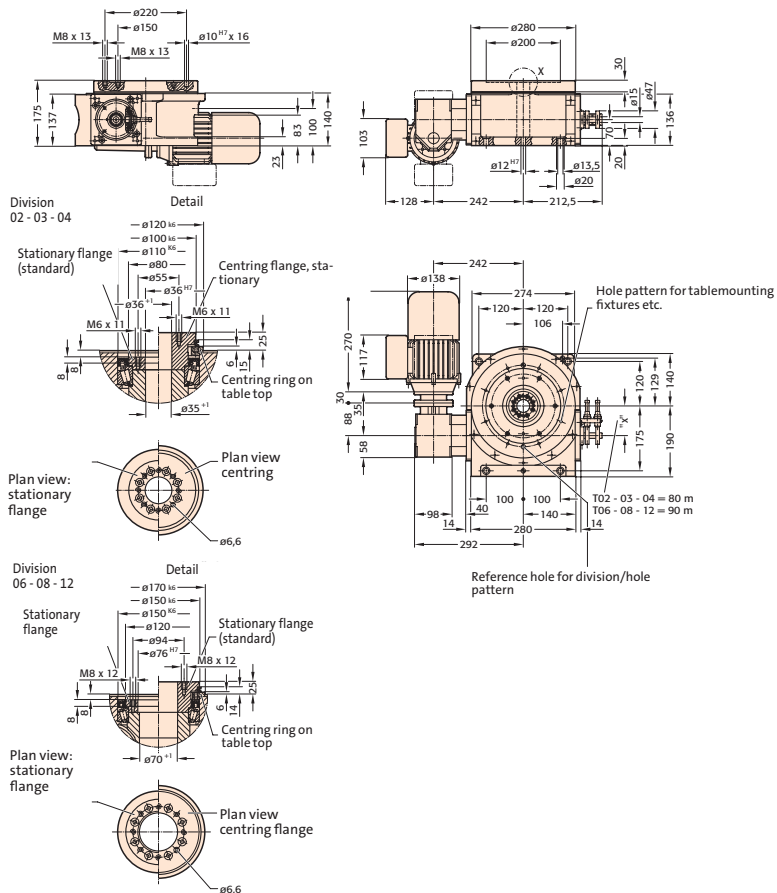
FIBROTOR ER.13.0280.1.152.XX.0.0.3
Drive arrangement 152



FIBROTOR ER.13.0280.1.152.XX.0.0.3
Drive arrangement 152

Installed dimensions FIBROTOR® ER.13

(Drive arrangement 152, for other drive arrangements, drawings of CAD data are available)



Technical data FIBROTOR® ER.13

Encoding

ER.13 . 0 2 8 0 . 1 0

Table top dimensions	Standard dimensions	$\phi 280$ mm	.0280	②
Drive motor	Standard braking motor		.1	③
Drive arrangement	See planning documents under www.fibrotor.de/downloads		.XXX	④
Divisions 2, 3, 4, 5, 6, 8, 10, 12, 16, 20, 24			.XX	⑤
Additional modules	Without additional modules		.0	⑥
	Vertical version		.3	⑦
	Vertical version with ground plate		.4	⑦
	Centring ring Centring flange Centring ring and centring flange		.1 .2 .3	⑧
Precisions	Division 2 – 12 Division 16 – 24	$\pm 30''$ $\pm 35''$		
In arc length (on $\phi 280$ mm)	Division 2 – 12 Division 16 – 24	$\pm 0,020$ mm $\pm 0,024$ mm		
Axial runout		0,02 mm		
Concentricity of the centre hole		0,02 mm		
Plane parallelism		0,04 mm		
Direction of rotation	Any, limit switch set for cw rotation			
Indexing frequency		40 c/min		
Indexing-dwell angle	Division 2 Division 3 – 5 Division 6 – 12 Division 16 – 24	330° / 30° 300° / 60° 270° / 90° 135° / 45°		
Voltage	Motor and brake	400 - 460 VAC, 50/60 Hz		
Motor output	Depending on indexing time and mass moment of inertia	0,25 – 0,55 kW		
Centre hole	Division 2 – 5 Division 6 – 12	$\phi 35$ mm $\phi 70$ mm		
Working position	Any, standard: Horizontal table top, (please specify other mounting positions on ordering)			
Weight		approx. 70 kg		

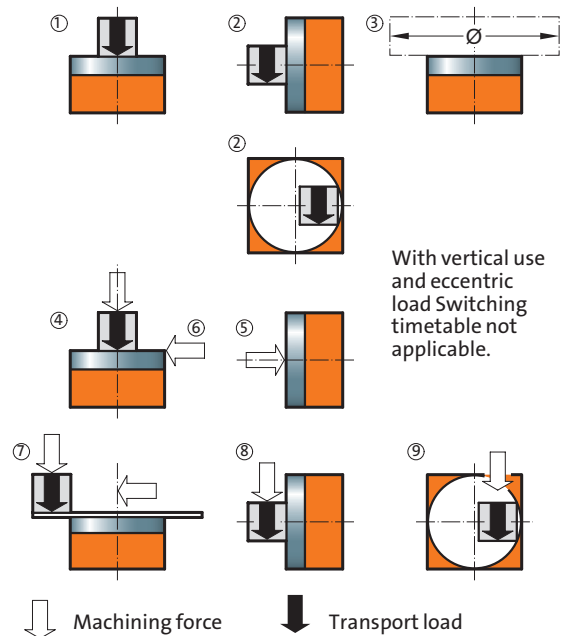
Indexing times FIBROTOR® ER.13

Divisions

2	t _s in s	3,36	2,81	2,14	1,81	1,38	1,06	0,90				
	J in kgm ²	75,73	54,10	33,28	23,21	13,36	7,87	5,65				
3	t _s in s	3,06	2,56	1,94	1,64	1,50	1,25	0,96	0,82			
	J in kgm ²	101	74,30	44,31	31,24	26,01	18,00	10,63	7,66			
4	t _s in s	3,06	2,56	1,94	1,64	1,50	1,25	0,96	0,82	0,68	0,48	
	J in kgm ²	145	103	61,30	44,63	37,17	25,75	15,25	11,01	7,45	3,66	
5	t _s in s	3,06	2,56	1,94	1,64	1,50	1,25	0,96	0,82	0,68	0,48	
	J in kgm ²	191	137	81,07	59,05	49,19	34,10	20,21	14,61	9,91	4,90	
6	t _s in s	2,75	2,30	1,75	1,48	1,35	1,13	0,87	0,74	0,61	0,43	0,39
	J in kgm ²	286	204	120	88,12	73,42	50,93	30,23	21,88	14,87	7,41	5,94
8	t _s in s	2,75	2,30	1,75	1,48	1,35	1,13	0,87	0,74	0,61	0,43	0,39
	J in kgm ²	373	267	159	115	100	69,54	41,30	29,92	20,35	10,18	8,00
10	t _s in s	2,75	2,30	1,75	1,48	1,35	1,13	0,87	0,74	0,61	0,43	0,39
	J in kgm ²	472	338	202	146	127	88,15	52,38	37,95	25,84	12,94	10,19
12	t _s in s	2,75	2,30	1,75	1,48	1,35	1,13	0,87	0,74	0,61	0,43	0,39
	J in kgm ²	570	408	244	176	153	106	63,29	45,87	31,24	15,67	12,34
16	t _s in s	1,38	1,15	0,88	0,74	0,68	0,56	0,43	0,37	0,31		
	J in kgm ²	160	115	68,82	51,81	44,53	30,86	18,28	13,21	8,95		
20	t _s in s	1,38	1,15	0,88	0,74	0,68	0,56	0,43	0,37	0,31		
	J in kgm ²	227	162	97,23	73,21	62,93	43,64	25,89	18,73	12,72		
24	t _s in s	1,38	1,15	0,88	0,74	0,68	0,56	0,43	0,37	0,31		
	J in kgm ²	280	200	120	90,42	77,73	53,92	32,00	23,17	15,75		

Load data FIBROTOR® ER.13

Perm. transport load	kg	1500	①+②
Horizontal table top	kg	400	
Vertical table top	kg	400	
Table top, upside-down	kg	400	
Perm. add-on diameter	mm	1400	③
Horizontal	mm	1400	
Vertical	mm	1400	
Upside-down	mm	1400	
Perm. axial loading on the table top	N	16000	④+⑤
Horizontal	N	6000	
Vertical	N	6000	
Upside-down	N	6000	
Perm. radial loading on table top	N	10000	⑥
Horizontal	N	10000	
Vertical	N	10000	
Upside down	N	10000	
Perm. tilting moment on positioned table top	Nm	3000	⑦+⑧
Horizontal	Nm	1500	
Vertical	Nm	800	
Upside-down	Nm	800	
Perm. tilting moment on rotating table top	Nm	1000	⑦+⑧
Horizontal	Nm	800	
Vertical	Nm	400	
Upside-down	Nm	400	
Perm. tangential moment on positioned table top	Nm	600	⑨
Horizontal	Nm	600	
Vertical	Nm	600	
Upside-down	Nm	600	



CAD files, technical data and planning documentation can be downloaded from www.fibrotor.de



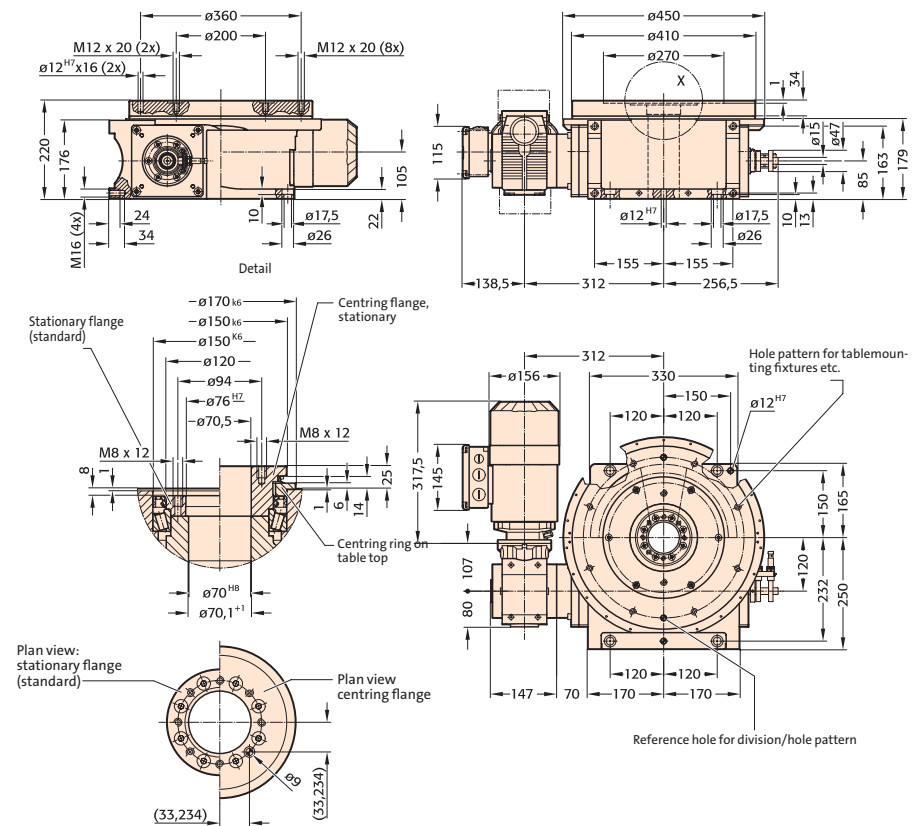
FIBROTOR ER.15.0410.1.142.XX.0.0.3
Drive arrangement 142



FIBROTOR ER.15.0410.1.142.XX.0.0.3
Drive arrangement 142

Installed dimensions FIBROTOR® ER.15

(Drive arrangement 152, for other drive arrangements, drawings of CAD data are available)



Technical data FIBROTOR® ER.15

Encoding

ER.15 . 0 4 1 0 . 1 0

Table top dimensions	Standard dimensions	Ø 410 mm	.0410	
Drive motor	Standard braking motor		.1	
Drive arrangement	See planning documents under www.fibrotor.de/downloads		.XXX	
Divisions 2, 3, 4, 5, 6, 8, 10, 12, 16, 20, 24			.XX	
Additional modules	Without additional modules		.0	
	Vertical version		.3	⑦
	Vertical version with ground plate		.4	
	Centring ring		.1	
	Centring flange		.2	
	Centring ring and centring flange		.3	⑧
Precisions	Division 2 – 12	± 20"		
	Division 16 – 24	± 25"		
In arc length (on Ø 410 mm)	Division 2 – 12	± 0,020 mm		
	Division 16 – 24	± 0,025 mm		
Axial runout		0,03 mm		
Concentricity of the centre hole		0,03 mm		
Plane parallelism		0,06 mm		
Direction of rotation	Any, limit switch set for cw rotation			
Indexing frequency		40 c/min		
Indexing-dwell angle	Division 2	330° / 30°		
	Division 3 – 5	300° / 60°		
	Division 6 – 12	270° / 90°		
	Division 16 – 24	135° / 45°		
Voltage	Motor and brake	400 - 460 V 3 AC, 50/60 Hz		
Motor output	Depending on indexing time and mass moment of inertia	0,25 – 1,5 kW		
Centre hole		Ø 70 mm		
Working position	Any, standard: Horizontal table top, (please specify other mounting positions on ordering)			
Weight		approx. 150 kg		

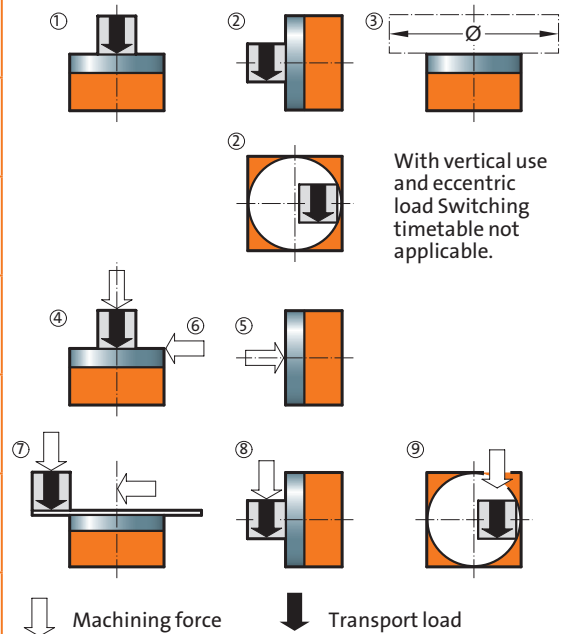
Indexing times FIBROTOR® ER.15

Divisions

2	t _s in s	5,13	4,38	3,90	3,35	2,82	2,51	2,22	2,14	1,86	1,49	1,27	1,13				
	J in kgm ²	680	496	392	304	215	170	134	124	93,34	59,71	42,82	31,36				
3	t _s in s	4,67	3,99	3,54	3,04	2,60	2,31	2,05	1,98	1,68	1,36	1,15	1,03	0,88			
	J in kgm ²	914	703	556	409	308	243	191	178	127	83,11	59,71	47,40	32,87			
4	t _s in s	4,67	3,99	3,54	3,09	2,64	2,35	2,05	1,98	1,71	1,37	1,16	1,04	0,88			
	J in kgm ²	1303	1003	793	602	453	357	273	254	190	120	86,80	68,99	49,34			
5	t _s in s	4,67	3,99	3,54	3,09	2,64	2,35	2,08	2,01	1,71	1,39	1,16	1,04	0,88			
	J in kgm ²	1723	1327	1049	796	598	473	372	346	252	164	115	91,49	66,48			
6	t _s in s	4,20	3,19	2,78	2,34	2,08	1,85	1,78	1,52	1,23	1,04	0,93	0,79	0,74	0,65	0,62	0,56
	J in kgm ²	2294	1488	1192	871	688	542	504	367	239	172	135	98,62	81,04	53,78	49,60	36,55
8	t _s in s	4,20	3,19	2,78	2,37	2,11	1,87	1,81	1,54	1,25	1,04	0,93	0,80	0,74	0,65	0,63	0,56
	J in kgm ²	2347	1918	1541	1186	967	761	708	516	336	235	187	136	118	90,53	84,77	67,76
10	t _s in s	4,20	3,19	2,74	2,37	2,11	1,87	1,81	1,57	1,25	1,06	0,93	0,80	0,75	0,65	0,63	0,56
	J in kgm ²	3965	2573	2002	1551	1226	965	897	674	427	307	238	173	152	116	107	86,10
12	t _s in s	4,22	3,21	2,91	2,48	2,21	1,96	1,78	1,54	1,25	1,07	0,96	0,82	0,76	0,66	0,64	0,57
	J in kgm ²	3288	2134	1850	1392	1100	866	714	536	350	259	207	150	128	98,29	90,73	73,59
16	t _s in s	2,11	1,60	1,37	1,19	1,06	0,94	0,90	0,78	0,62	0,52	0,47	0,40	0,37			
	J in kgm ²	1466	885	688	533	421	331	308	231	146	102	81,42	59,13	51,75			
20	t _s in s	2,11	1,60	1,37	1,19	1,06	0,94	0,90	0,78	0,62	0,53	0,47	0,40	0,37			
	J in kgm ²	2070	1264	972	753	595	468	435	327	207	149	115	83,88	73,46			
24	t _s in s	2,11	1,60	1,37	1,17	1,04	0,92	0,89	0,77	0,62	0,54	0,48	0,40	0,38			
	J in kgm ²	1735	1059	815	613	484	381	354	266	173	128	102	72,25	63,25			

Load data FIBROTOR® ER.15

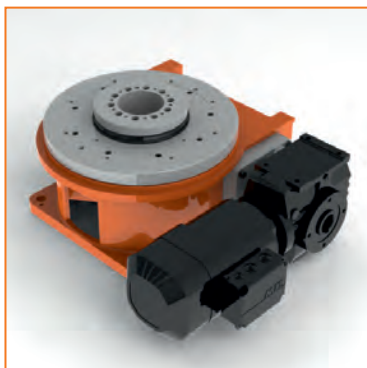
Perm. transport load				
Horizontal table top	kg	2500	①+②	
Vertical table top	kg	600		
Table top, upside-down	kg	600		
Perm. add-on diameter				
Horizontal	mm	2000	③	
Vertical	mm	2000		
Upside-down	mm	2000		
Perm. axial loading on the table top				
Horizontal	N	25000	④+⑤	
Vertical	N	9000		
Upside-down	N	9000		
Perm. radial loading on table top				
Horizontal	N	15000	⑥	
Vertical	N	15000		
Upside down	N	15000		
Perm. tilting moment on positioned table top				
Horizontal	Nm	6000	⑦+⑧	
Vertical	Nm	3000		
Upside-down	Nm	1500		
Perm. tilting moment on rotating table top				
Horizontal	Nm	2000	⑦+⑧	
Vertical	Nm	2000		
Upside-down	Nm	700		
Perm. tangential moment on positioned table top				
Horizontal	Nm	1200	⑨	
Vertical	Nm	1200		
Upside-down	Nm	1200		



CAD files, technical data and planning documentation can be downloaded from www.fibrotor.de



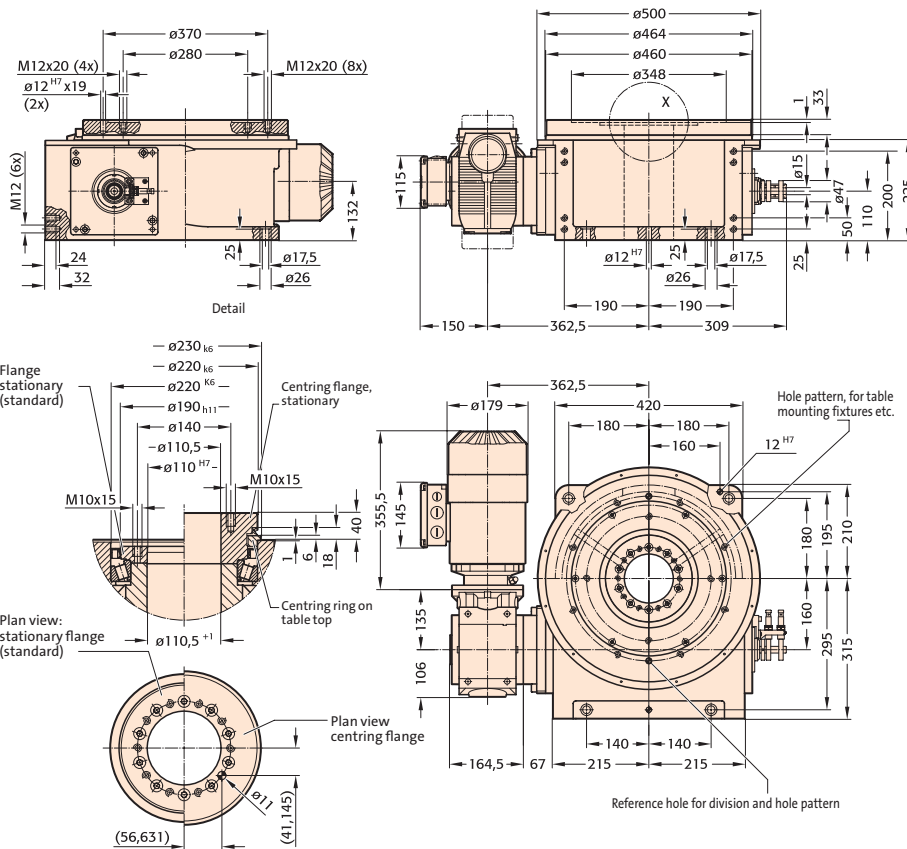
FIBROTOR ER.16.0460.1.142.XX.0.0.3
Drive arrangement 142



FIBROTOR ER.16.0460.1.142.XX.0.0.3
Drive arrangement 142

Installed dimensions FIBROTOR® ER.16

(Drive arrangement 152, for other drive arrangements, drawings of CAD data are available)



Technical data FIBROTOR® ER.16		Encoding	
		ER.16	. 0 4 6 0 . 1 0 . . .
Table top dimensions	Standard dimensions	Ø 460 mm	.0460 ②
Drive motor	Standard braking motor		.1 ③
Drive arrangement	See planning documents under www.fibrotor.de/downloads		.XXX ④
Divisions 2, 3, 4, 5, 6, 8, 10, 12, 16, 20, 24			.XX ⑤
Additional modules	Without additional modules		.0 ⑥
	Vertical version		.3 ⑦
	Vertical version with ground plate		.4 ⑦
	Centring ring Centring flange Centring ring and centring flange		.1 .2 .3 ⑧
Precisions	Division 2 – 12 Division 16 – 24	± 20" ± 25"	
In arc length (on Ø 460 mm)	Division 2 – 12 Division 16 – 24	± 0,022 mm ± 0,028 mm	
Axial runout		0,03 mm	
Concentricity of the centre hole		0,03 mm	
Plane parallelism		0,06 mm	
Direction of rotation	Any, limit switch set for cw rotation		
Indexing frequency		40 c/min	
Indexing-dwell angle	Division 2 Division 3 – 5 Division 6 – 12 Division 16 – 24	330° / 30° 300° / 60° 270° / 90° 135° / 45°	
Voltage	Motor and brake	400 - 460 VAC, 50/60 Hz	
Motor output	Depending on indexing time and mass moment of inertia	0,37 – 3,0 kW	
Centre hole		Ø 110 mm	
Working position	Any, standard: Horizontal table top, (please specify other mounting positions on ordering)		
Weight		approx. 220 kg	

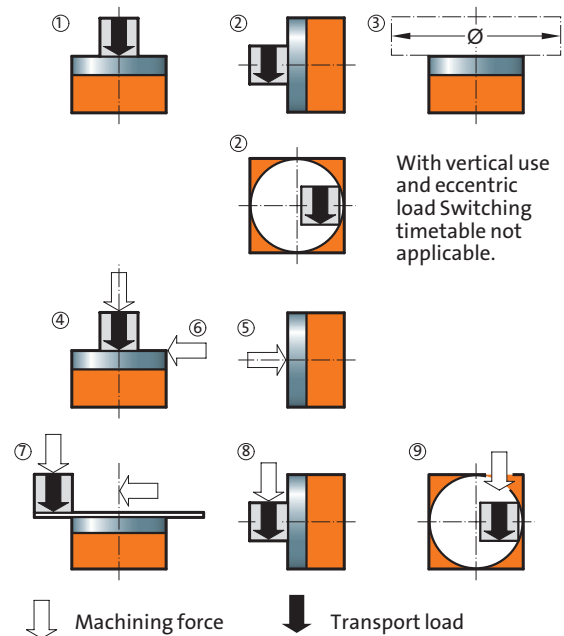
Indexing times FIBROTOR® ER.16

Division

2	t _s in s	5,25	4,77	3,81	3,37	3,04	2,43	2,13	1,81	1,63	1,44	1,36	1,16	1,06			
	J in kgm ²	1408	1162	742	613	499	318	245	176	143	110,1	98	71,7	58,9			
3	t _s in s	4,77	4,33	3,46	3,07	2,79	2,23	1,95	1,65	1,49	1,31	1,23	1,05	0,95			
	J in kgm ²	1891	1648	1053	824	702	448	344	244	198	153	136	98	81			
4	t _s in s	4,77	4,33	3,46	3,11	2,83	2,23	1,95	1,66	1,49	1,31	1,23	1,05	0,95			
	J in kgm ²	2997	2475	1581	1274	1052	652	502	361	289	224	199	144	118,7			
5	t _s in s	4,77	4,33	3,46	3,11	2,83	2,26	1,98	1,66	1,50	1,32	1,23	1,05	0,95			
	J in kgm ²	3565	3107	1985	1600	1363	870	669	467	381	294	259	187	154			
6	t _s in s	4,29	3,90	3,12	2,80	2,54	2,03	1,78	1,49	1,35	1,18	1,12	0,95	0,86	0,78	0,65	0,55
	J in kgm ²	3223	2828	1913	1627	1386	885	681	476	387	299	267	190	157	129	89,1	63,6
8	t _s in s	4,29	3,90	3,12	2,84	2,58	2,06	1,78	1,51	1,37	1,18	1,12	0,95	0,87	0,78	0,65	0,55
	J in kgm ²	3297	3177	2465	2165	1888	1244	929	668	544	409	364	264	218	176	122,1	87,4
10	t _s in s	4,29	3,90	3,12	2,84	2,58	2,06	1,81	1,51	1,37	1,20	1,13	0,95	0,87	0,79	0,65	0,55
	J in kgm ²	5571	4888	3307	2896	2467	1576	1213	847	690	534	476	335	276	227	155	111,1
12	t _s in s	4,29	3,90	3,12	2,84	2,58	2,06	1,81	1,54	1,39	1,20	1,13	0,97	0,87	0,79	0,65	0,56
	J in kgm ²	6727	5902	3993	3497	2979	1903	1464	1053	858	645	575	416	334	275	190	136
16	t _s in s	2,15	1,95	1,56	1,42	1,29	1,03	0,90	0,76	0,68	0,60	0,56	0,48	0,43			
	J in kgm ²	2037	1722	1138	996	849	542	417	291	237	183	158	114,2	94			
20	t _s in s	2,15	1,95	1,56	1,42	1,29	1,03	0,90	0,77	0,68	0,60	0,57	0,48	0,43			
	J in kgm ²	2876	2431	1606	1407	1198	765	589	423	335	259	230	162	133			
24	t _s in s	2,15	1,95	1,56	1,42	1,29	1,03	0,90	0,77	0,69	0,60	0,57	0,48	0,43			
	J in kgm ²	3551	3001	1983	1737	1480	945	727	523	426	320	285	206	165			

Load data FIBROTOR® ER.16

Perm. transport load				
Horizontal table top	kg	4000	①+②	
Vertical table top	kg	800		
Table top, upside-down	kg	800		
Perm. add-on diameter				
Horizontal	mm	2400	③	
Vertical	mm	2400		
Upside-down	mm	2400		
Perm. axial loading on the table top				
Horizontal	N	32000	④+⑤	
Vertical	N	11000		
Upside-down	N	11000		
Perm. radial loading on table top				
Horizontal	N	20000	⑥	
Vertical	N	20000		
Upside down	N	20000		
Perm. tilting moment on positioned table top				
Horizontal	Nm	9000	⑦+⑧	
Vertical	Nm	4200		
Upside-down	Nm	2300		
Perm. tilting moment on rotating table top				
Horizontal	Nm	3000	⑦+⑧	
Vertical	Nm	3000		
Upside-down	Nm	900		
Perm. tangential moment on positioned table top				
Horizontal	Nm	1400	⑨	
Vertical	Nm	1400		
Upside-down	Nm	1400		



CAD files, technical data and planning documentation can be downloaded from www.fibrotor.de



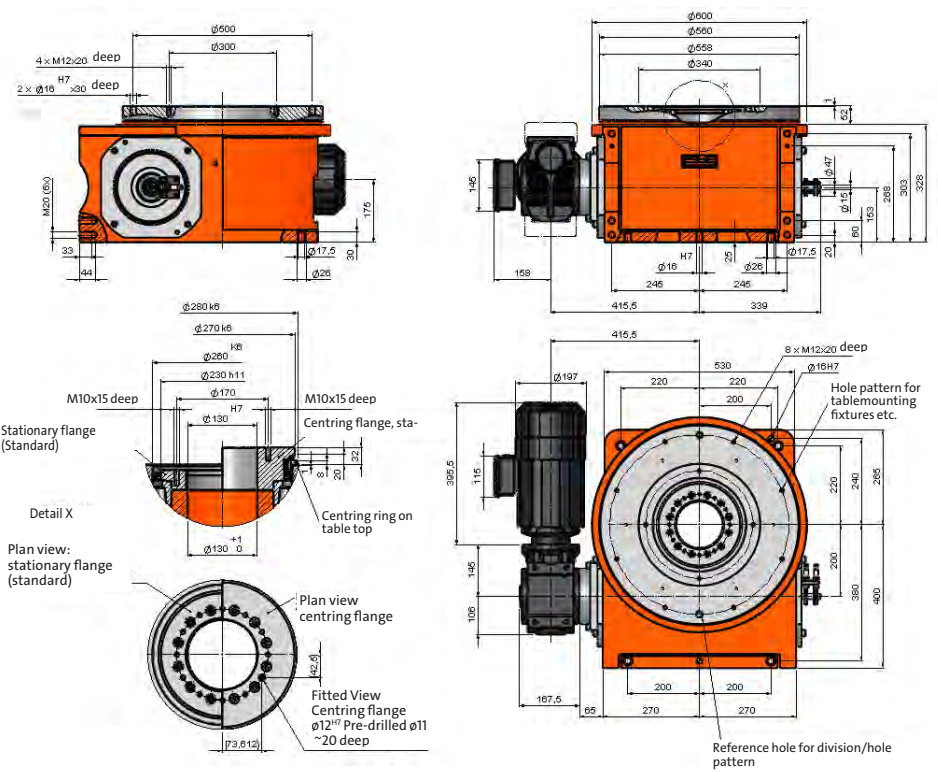
FIBROTOR ER.17.0558.1.142.XX.0.0.3
Drive arrangement 142

Installed dimensions FIBROTOR® ER.17

(Drive arrangement 142, for other drive arrangements, drawings of CAD data are available)



FIBROTOR ER.17.0558.1.142.XX.0.0.3
Drive arrangement 142



Technical data FIBROTOR® ER.17

Encoding

ER.17 . 0 5 5 8 . 1 0 . . .

Table top dimensions	Standard dimensions	Ø 558 mm	.0558	②
Drive motor	Standard braking motor		.1	③
Drive arrangement	See planning documents under www.fibrotor.de/downloads		.XXX	④
Divisions 2, 3, 4, 5, 6, 8, 10, 12, 16, 20, 24			.XX	⑤
Additional modules	Without additional modules		.0	⑥
	Vertical version		.3	⑦
	Vertical version with ground plate		.4	⑦
	Centring ring Centring flange Centring ring and centring flange		.1 .2 .3	⑧
Precisions	Division 2 – 12 Division 16 – 24	± 20" ± 25"		
In arc length (on Ø 558 mm)	Division 2 – 12 Division 16 – 24	± 0,027 mm ± 0,034 mm		
Axial runout		0,04 mm		
Concentricity of the centre hole		0,04 mm		
Plane parallelism		0,08 mm		
Direction of rotation	Any, limit switch set for cw rotation			
Indexing frequency		30 c/min		
Indexing- dwell angle	Division 2 Division 3 – 5 Division 6 – 12 Division 16 – 24	330° / 30° 300° / 60° 270° / 90° 135° / 45°		
Voltage	Motor and brake	400 - 460 V 3 AC, 50/60 Hz		
Motor output	Depending on indexing time and mass moment of inertia	0,37 – 4,0 kW		
Centre hole		Ø 130 mm		
Working position	Any, standard: Horizontal table top, (please specify other mounting positions on ordering)			
Weight		approx. 450 kg		

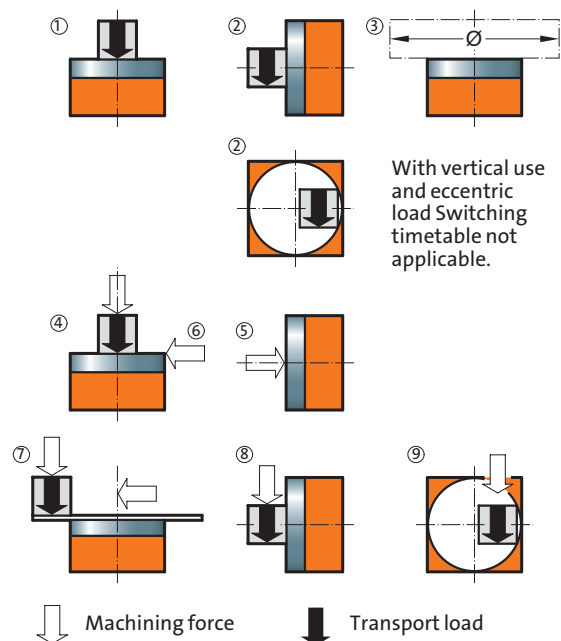
Indexing times FIBROTOR® ER.17

Division

2	t _s in s	5,08	4,61	3,69	3,35	3,04	2,43	2,13	1,81	1,63	1,45	1,37	1,16	1,06			
	J in kgm ²	1991	1644	1049	864	713	455	349	250	203	159	141	102	83,3			
3	t _s in s	4,77	4,19	3,35	3,07	2,77	2,21	1,94	1,65	1,49	1,31	1,24	1,06	0,96			
	J in kgm ²	3297	2691	1718	1436	1206	769	591	425	345	267	241	174	143			
4	t _s in s	4,77	4,33	3,46	3,07	2,79	2,23	1,94	1,65	1,49	1,31	1,23	1,05	0,96			
	J in kgm ²	5225	4315	2756	2157	1781	1137	862	619	504	389	347	251	209			
5	t _s in s	4,77	4,33	3,46	3,07	2,79	2,23	1,95	1,65	1,49	1,31	1,23	1,05	0,95			
	J in kgm ²	6215	5418	3460	2709	2308	1473	1133	803	654	505	450	325	268			
6	t _s in s	4,29	3,90	3,12	2,80	2,51	2,00	1,76	1,48	1,34	1,18	1,11	0,95	0,86	0,78	0,65	0,56
	J in kgm ²	5619	4930	3335	2837	2347	1499	1153	817	665	514	458	331	273	224	157	112
8	t _s in s	4,29	3,90	3,12	2,80	2,54	2,03	1,76	1,49	1,35	1,18	1,11	0,95	0,86	0,78	0,65	0,55
	J in kgm ²	5749	5539	4297	3666	3196	2105	1574	1131	922	702	626	453	374	307	212	152
10	t _s in s	4,29	3,90	3,12	2,84	2,54	2,03	1,78	1,49	1,35	1,18	1,12	0,95	0,86	0,78	0,65	0,55
	J in kgm ²	9713	8522	5765	5049	4177	2668	2053	1434	1168	903	805	575	474	390	270	193
12	t _s in s	4,29	3,90	3,12	2,84	2,58	2,06	1,81	1,54	1,37	1,20	1,13	0,95	0,87	0,79	0,65	0,55
	J in kgm ²	11728	10291	6961	6098	5194	3318	2553	1836	1453	1123	1002	704	581	478	331	234
16	t _s in s	2,15	1,95	1,56	1,40	1,27	1,02	0,89	0,75	0,67	0,59	0,56	0,47	0,43			
	J in kgm ²	3552	3002	1983	1687	1436	917	705	492	400	309	275	196	161			
20	t _s in s	2,15	1,95	1,56	1,42	1,29	1,03	0,89	0,76	0,67	0,59	0,56	0,48	0,43			
	J in kgm ²	5015	4238	2801	2453	2089	1334	996	716	566	437	390	282	229			
24	t _s in s	2,15	1,95	1,56	1,42	1,29	1,03	0,90	0,76	0,68	0,60	0,56	0,48	0,43			
	J in kgm ²	6191	5232	3458	3028	2579	1647	1267	884	720	557	482	348	287			

Load data FIBROTOR® ER.17

Perm. transport load				
Horizontal table top	kg	5500	①+②	
Vertical table top	kg	1000		
Table top, upside-down	kg	1000		
Perm. add-on diameter				
Horizontal	mm	2800	③	
Vertical	mm	2800		
Upside-down	mm	2800		
Perm. axial loading on the table top				
Horizontal	N	70000		
Vertical	N	12000	④+⑤	
Upside-down	N	25000		
Perm. radial loading on table top				
Horizontal	N	25000	⑥	
Vertical	N	25000		
Upside down	N	25000		
Perm. tilting moment on positioned table top				
Horizontal	Nm	12000	⑦+⑧	
Vertical	Nm	6000		
Upside-down	Nm	3000		
Perm. tilting moment on rotating table top				
Horizontal	Nm	4000	⑦+⑧	
Vertical	Nm	4000		
Upside-down	Nm	1200		
Perm. tangential moment on positioned table top				
Horizontal	Nm	1600	⑨	
Vertical	Nm	1600		
Upside-down	Nm	1600		



CAD files, technical data and planning documentation can be downloaded from www.fibrotor.de