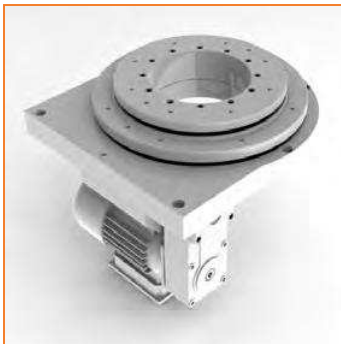


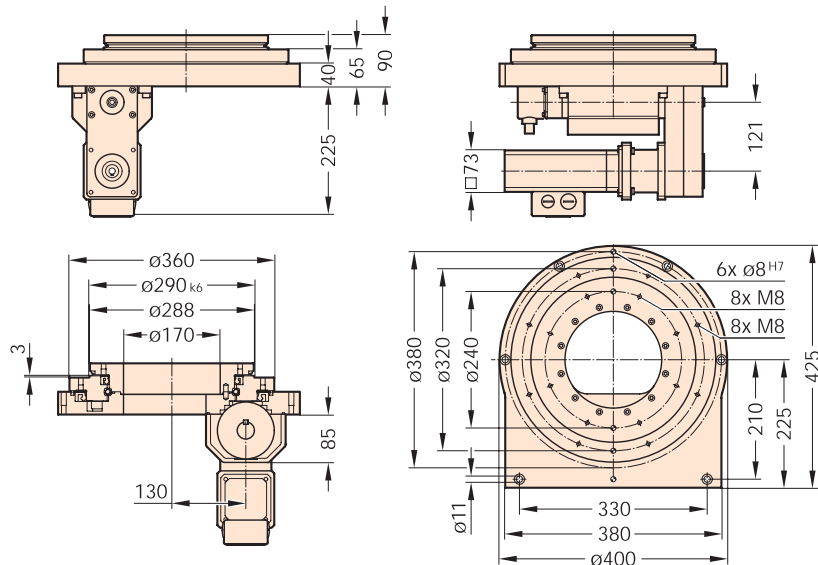
FIBROTOR RT.NC.12.0360.1.222.00.0.0.3
Drive arrangement 222



FIBROTOR RT.NC.12.0360.1.222.00.0.0.3
Drive arrangement 222

Installed dimensions FIBROTOR® RT.NC.12

(Drive arrangement 222, for other drive arrangements, drawing or CAD data are available)



Technical data FIBROTOR® RT.NC.12

Encoding

RT.NC.12 . 0 3 6 0 . [] . [] . [] . 0 . [] . []

Table top dimensions	Standard dimension	Ø 0360 mm	.0360	②
Drive motor	Standard braking motor		.1	③
	Hydraulic motor		.5	
	Pneumatic motor		.6	
	AC servomotor		.7	
	Special brake motor		.8	
	Special version		.9	
	Without motor		.0	
Drive arrangement	See planing documents under www.fibrotor.de/downloads		.XXX	④
Divisions	Can be positioned arbitrarily		.XX	⑤
Additional assemblies	Without additional assemblies		.0	⑥
	Built-in version		.1	⑦
	Built-in version with mounting ring		.2	
	Centring ring (included in basis price)		.1	⑧
Centring ring and centring flange		.3		
Indexing accuracy in arc seconds (increased indexing accuracy on	Indirect reading	± 30"		
	Motor reading	± 120"		
Precision in arc length (am Ø 460 mm)	Indirect reading	± 0,026 mm		
	Motor reading	± 0,104mm		
Axial runout of table top	(relates to Ø 360 mm)	0,02 mm		
Concentricity of the centre hole	(relates to Ø 290 mm)	0,02 mm		
Plane parallelism of table top tp base on the housing	(relates to Ø 360 mm)	0,04 mm		
Direction of rotation	CW-CCW rotation			

Technical data FIBROTOR® RT.NC.12

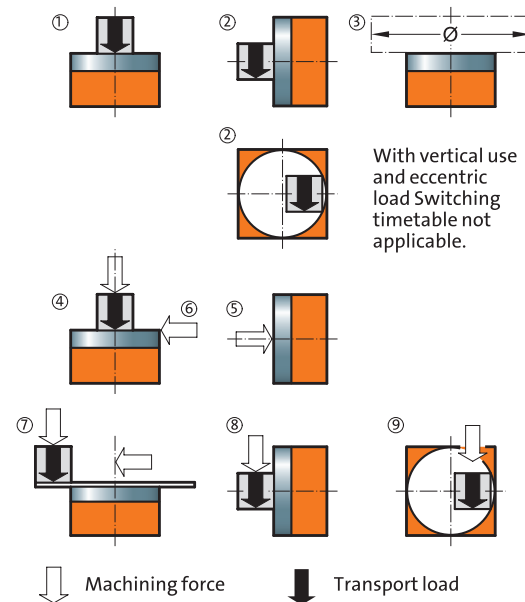
Switching/ hold angles		i = 16
Voltage	i = 106,496; i = 128; i = 160; i = 286,944; i = 416	i = 128,000
Motor output		$n_{max} = 28 \text{ U/min}$
Centre hole	Flattened	Ø 170 mm
Working position	Any, standard: Horizontal table top, (please specify other mounting positions on ordering)	
Weight		approx. 50 kg

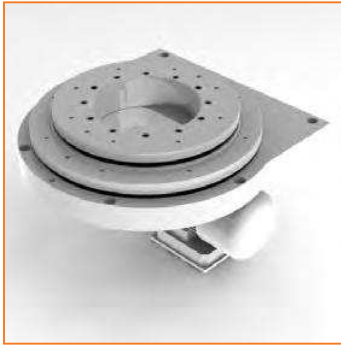
Indexing times FIBROTOR® RT.NC.12

Mass moment of inertia J in kgm ²	6	9	12	20	30
Max. perm. table top speed $\text{'}\text{/min}$	28	23	18	10	7
Acceleration time t_a in s	0,2	0,2	0,2	0,2	0,2
Overall gear ratio reduction i	106,496	128,000	160,000	286,944	416,000
Motor speed n in $\text{'}/\text{min}$	2982	2944	2880	2869	2912
Motor torque required in Nm	1,6	1,6	1,6	1,2	1,0
Swivel time t_s in s for					
360°	2,44	2,91	3,63	6,30	8,87
180°	1,37	1,60	1,97	3,30	4,59
90°	0,84	0,95	1,13	1,80	2,44
60°	0,66	0,73	0,86	1,30	1,73
45°	0,57	0,63	0,72	1,05	1,37
30°	0,48	0,52	0,58	0,80	1,01
20°	0,42	0,44	0,49	0,63	0,78
10°	0,36	0,37	0,39	0,47	0,54

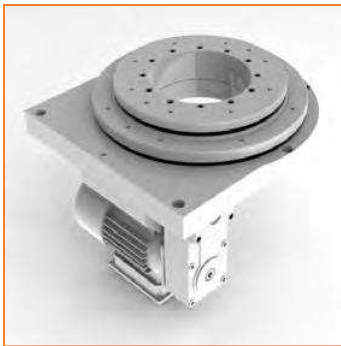
Load data FIBROTOR® RT.NC.12

Perm. transport load			
Horizontal table top	kg	400	①
Vertical table top	kg	200	②
Table top, upside-down	kg	400	
Perm. add-on diameter			③
Horizontal	mm	2000	
Vertical	mm	2000	
Upside-down	mm	2000	
Permissible axial loading on the table top			
Horizontal	N	12000	④
Vertical	N	5000	⑤
Upside-down	N	12000	
Perm. radial loading on table top			⑥
Horizontal	N	8000	
Vertical	N	8000	
Upside-down	N	8000	
Perm. tilting moment on positioned table top			
Horizontal	Nm	2000	⑦
Vertical	Nm	1500	⑧
Upside-down	Nm	2000	
Perm. tilting moment on rotating table top			⑦+⑧
Horizontal	Nm	600	
Vertical	Nm	600	
Upside-down	Nm	600	
Perm. tangential moment on positioned table top			
Horizontal	Nm	200	
Vertical	Nm	200	⑨
Upside-down	Nm	200	





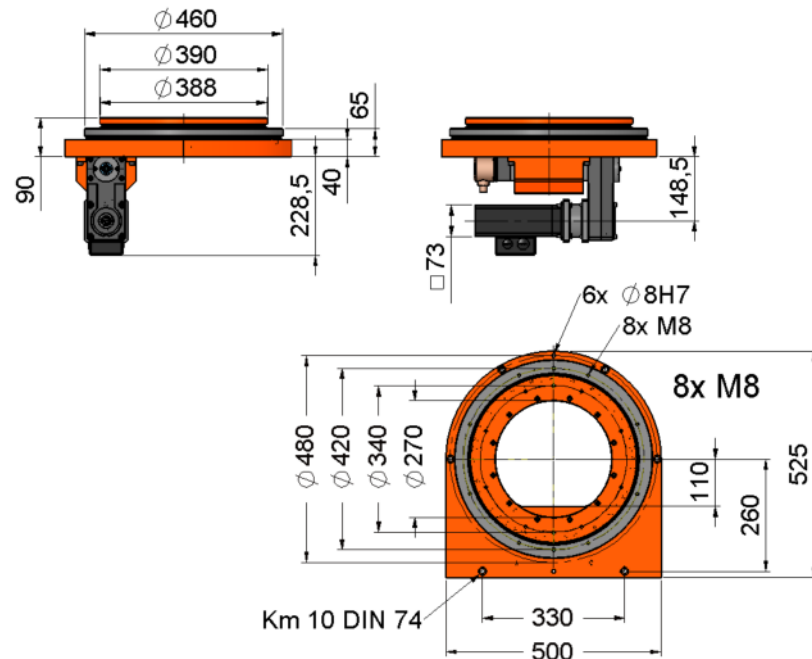
FIBROTOR RT.NC.13.0460.7.222.00.0.0.3
Drive arrangement 222



FIBROTOR RT.NC.13.0460.7.222.00.0.0.3
Drive arrangement 222

Installed dimensions FIBROTOR® RT.NC.13

(Drive arrangement 222, for other drive arrangements, drawing or CAD data are available)



Technical data FIBROTOR® RT.NC.13

Encoding

RT.NC.13 . 0 4 6 0 . [] . [] . [] . 0 . [] . []

Table top dimensions	Standard dimension	Ø 0460 mm	.0460	②
Drive motor	Standard braking motor		.1	③
	Hydraulic motor		.5	
	Pneumatic motor		.6	
	AC servomotor		.7	
	Special brake motor		.8	
	Special version		.9	
	Without motor		.0	
	Drive arrangement	See planing documents under www.fibrotor.de/downloads		
Divisions	Can be positioned arbitrarily		.XX	⑤
Additional assemblies	Without additional assemblies		.0	⑥
	Built-in version		.1	⑦
	Built-in version with mounting ring		.2	
	Centring ring (included in basis price)		.1	⑧
Centring ring and centring flange		.3		
Indexing accuracy in arc seconds (increased indexing accuracy on)	Indirect reading	± 30"		
	Motor reading	± 90"		
Precision in arc length (am Ø 460 mm)	Indirect reading	± 0,033 mm		
	Motor reading	± 0,100mm		
Axial runout of table top	(relates to Ø 460 mm)	0,04 mm		
Concentricity of the centre hole	(relates to Ø 390 mm)	0,04 mm		
Plane parallelism of table top tp base on the housing	(relates to Ø 460 mm)	0,08 mm		
Direction of rotation	CW-CCW rotation			

Technical data FIBROTOR® RT.NC.13

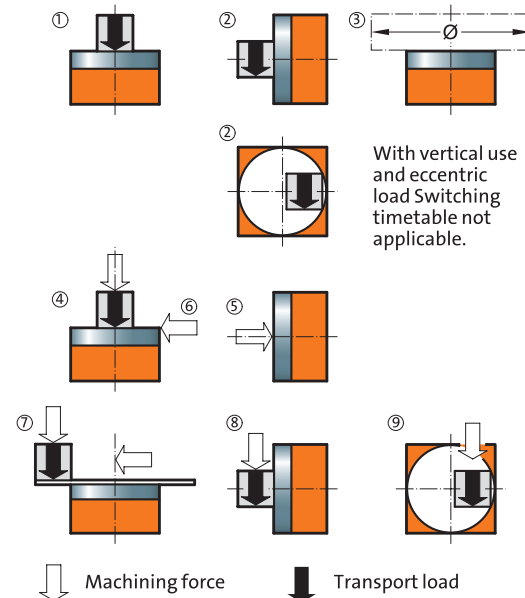
Switching/ hold angles		i = 24
Voltage		i = 192,000
Motor output		n _{max} = 18 U/min
Centre hole	Flattened	Ø 270 mm
Working position	Any, standard: Horizontal table top, (please specify other mounting positions on ordering)	
Weight		approx. 80 kg

Indexing times FIBROTOR® RT.NC.13

Mass moment of inertia J in kgm ²	6	9	12	20	30
Max. perm. table top speed $\dot{\varphi}$ /min	28	23	18	10	7
Acceleration time t _a in s	0,2	0,2	0,2	0,2	0,2
Overall gear ratio reduction i	106,496	128,000	160,000	286,944	416,000
Motor speed n in $\dot{\varphi}$ /min	2982	2944	2880	2869	2912
Motor torque required in Nm	1,6	1,6	1,6	1,2	1,0
Swivel time t _s in s for 360°	2,44	2,91	3,63	6,30	8,87
180°	1,37	1,60	1,97	3,30	4,59
90°	0,84	0,95	1,13	1,80	2,44
60°	0,66	0,73	0,86	1,30	1,73
45°	0,57	0,63	0,72	1,05	1,37
30°	0,48	0,52	0,58	0,80	1,01
20°	0,42	0,44	0,49	0,63	0,78
10°	0,36	0,37	0,39	0,47	0,54
5°	0,33	0,34	0,35	0,38	0,42
2°	0,31	0,31	0,32	0,33	0,35

Load data FIBROTOR® RT.NC.13

Perm. transport load			
Horizontal table top	kg	500	①
Vertical table top	kg	250	②
Table top, upside-down	kg	500	
Perm. add-on diameter			③
Horizontal	mm	2200	
Vertical	mm	2200	
Upside-down	mm	2200	
Permissible axial loading on the table top			
Horizontal	N	15000	④
Vertical	N	6000	⑤
Upside-down	N	15000	
Perm. radial loading on table top			⑥
Horizontal	N	10000	
Vertical	N	10000	
Upside-down	N	10000	
Perm. tilting moment on positioned table top			
Horizontal	Nm	2200	⑦
Vertical	Nm	1600	⑧
Upside-down	Nm	2200	
Perm. tilting moment on rotating table top			⑦+⑧
Horizontal	Nm	660	
Vertical	Nm	660	
Upside-down	Nm	660	
Perm. tangential moment on positioned table top			
Horizontal	Nm	240	⑨
Vertical	Nm	240	
Upside-down	Nm	240	



ACCURACIES

Indexing accuracy in arc seconds
(increased indexing accuracy on request)

Indirect measuring system	± 30
Measuring system at motor	± 40

Indexing accuracy in arc length on Ø 654 mm

Indirect measuring system	mm	± 0.048
Measuring system at motor	mm	± 0.063

Axial runout of table top on Ø 654 mm	mm	0.05
Concentricity of the centre hole on Ø 500 mm	mm	0.04

Plane parallelism of the table top to base of the housing on Ø 654 mm	mm	0.05
---	----	------

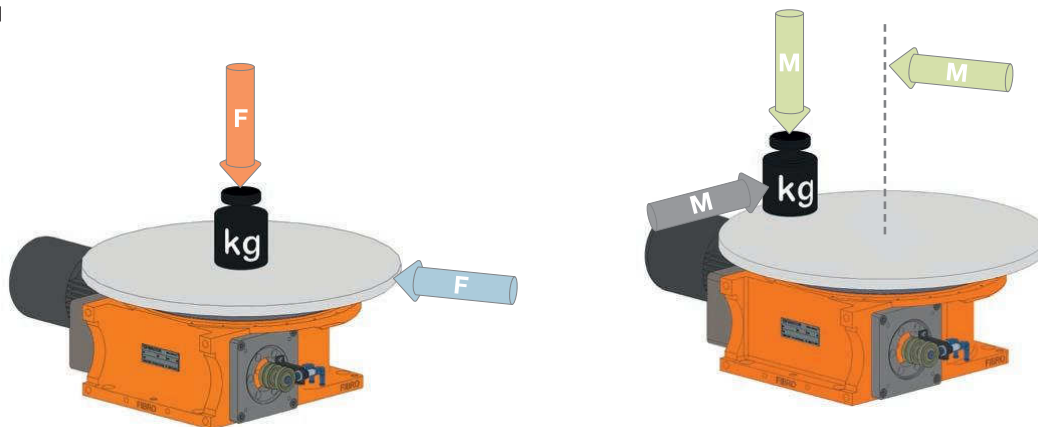
INDEXING TIMES







Mass moment of inertia J	kgm ²	10	50	100	250	500	800
Max. perm. table top speed	1/min	22	22	22	18.5	15	9.8
Acceleration time t_a	s	0.1	0.15	0.2	0.4	0.65	0.65
Overall gear ratio reduction i		160	160	160	160	200	303.4
Motor speed n	1/min	3,520	3,520	3,520	2,960	3,000	2,974
Motor torque required	Nm	15.0	15.0	16.0	12.5	9.2	6.5
Swivel time t_s for 360°	s	2.93	2.98	3.03	3.74	4.75	6.87
Swivel time t_s for 180°	s	1.56	1.61	1.66	2.12	2.75	3.81
Swivel time t_s for 120°	s	1.11	1.16	1.21	1.58	2.08	2.79
Swivel time t_s for 90°	s	0.88	0.93	0.98	1.31	1.75	2.28
Swivel time t_s for 60°	s	0.65	0.70	0.75	1.04	1.42	1.77
Swivel time t_s for 45°	s	0.54	0.59	0.64	0.91	1.25	1.52
Swivel time t_s for 30°	s	0.43	0.48	0.53	0.77	1.08	1.26
Swivel time t_s for 20°	s	0.35	0.40	0.45	0.68	0.97	1.09
Swivel time t_s for 10°	s	0.28	0.33	0.38	0.59	0.86	0.92
Swivel time t_s for 5°	s	0.24	0.29	0.34	0.55	0.81	0.84

LOAD DATA TABLE TOP

PERMITTED ADD-ON-Ø: 3,000 MM

Horizontal



		Horizontal
 Perm. transport load	kg	800
 Perm. axial loading	N	5,000
 Perm. radial loading	N	8,000
 Perm. tilting moment on positioned table top	Nm	2,250
 Perm. tilting moment on rotating table top	Nm	750
 Perm. tangential moment on positioned table top	Nm	2,000